



## PT2060/98 DISP Display System

Pro vibTech's PT2060/98 DISP display system is a powerful touch-panel display loaded with PCM370 vibration analysis system software. The PT2060/98 DISP connects to the PT2060 system via Modbus. The PCM370 software will collect, store, analyze and display the machinery status data locally or to a wide area network.

- ✓ ID each channel, and arrange the routing
- ✓ Setup data collection strategy
- ✓ Display machine photo and real-time data and status on top of the photo
- ✓ Real-time bar graph/ status list/ alarm status of each channel
- ✓ Alarm events
- ✓ Trend plot on each channel
- ✓ Touch-panel for easy operation
- ✓ Network to control systems (PLC/DCS or Historian) via Modbus

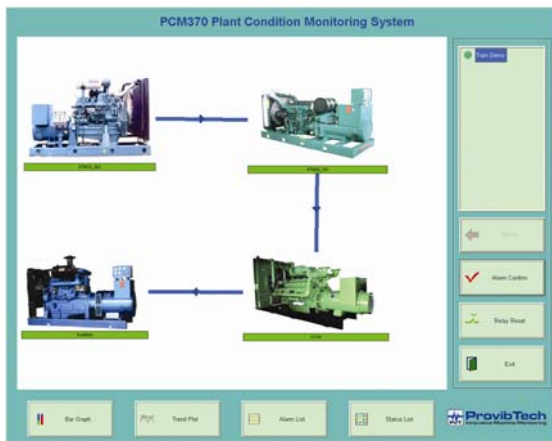
### Specifications

#### Electrical

Touch Screen PC power supply:

110VAC: From 85 to 132VAC. Frequency from 47Hz to 63 Hz @4A

230VAC: From 175 to 264VAC. Frequency from 47Hz to 63Hz @4A



#### Environmental

Temperature:

Operation: 0°C to +60°C

Storage: -20°C to +85°C

Humidity:

95% non-condensing

#### Physical

Touch panel, color 15" PC

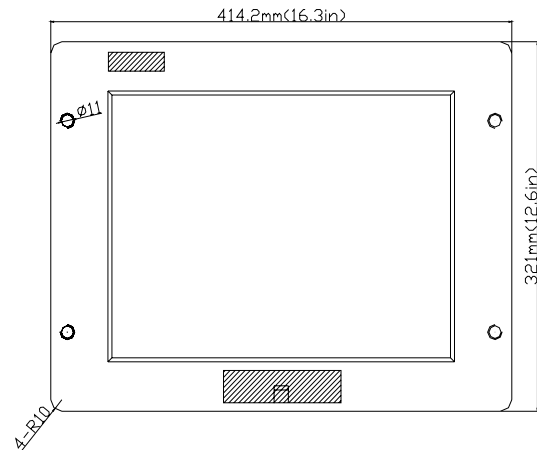
Mounting size: H: 321 mm (12.6")

W: 414.20 mm (16.3")

Touch panel, color 15" PC

Mounting size: H: 321 mm (12.6")

W: 414.20 mm (16.3")



321 mm (12.6") X 414.20 mm (16.3")

### Ordering Information

**Warning:** only work with PT2060/91 or PT2060/96 module

PT2060/98-BX

BX: Touch panel with PCM370 for PT2060 software

B0: No touch panel (only include PCM370 for PT2060 software)

B1: PCM-T-15-230 15" Touch panel with 230VAC power

B2: PCM-T-15-110 15" Touch panel with 110VAC power

Optional Accessories:

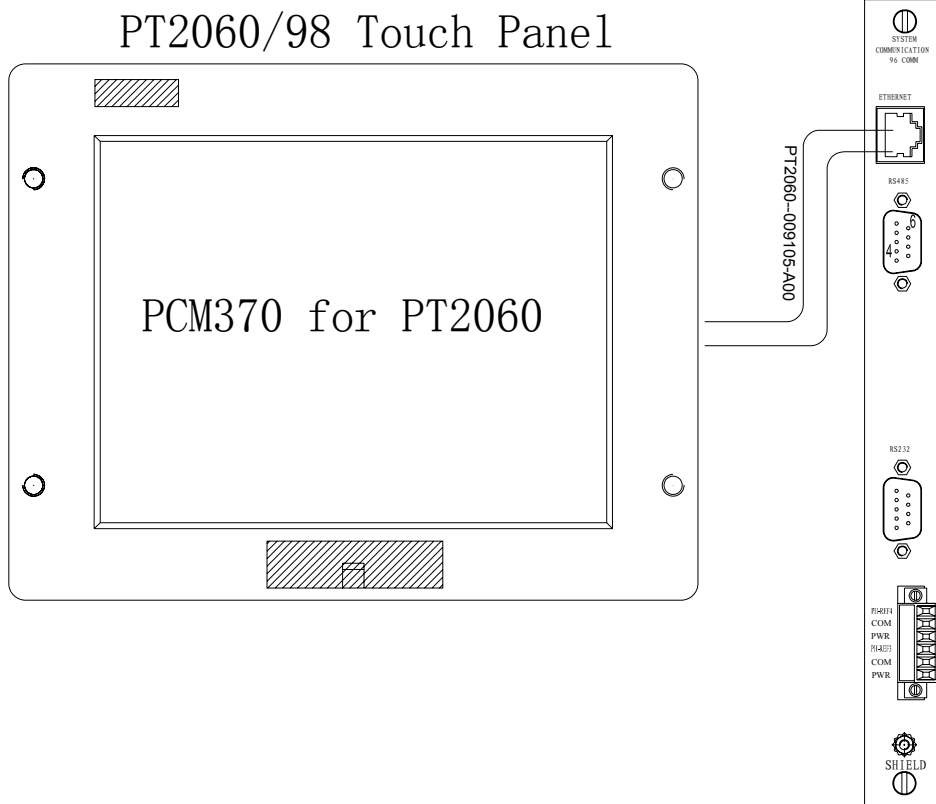
PT2060-009800: HP dvd1040e external DVD writer.

PT2060-009801: Windows xp English version



# PT2060 Monitor

Connect PT2060/98 with PT2060/96 via Ethernet



Connect PT2060/98 with PT2060/96 via USB to RS485 Converter

